



CSE GS C

60-500 ton
Stroke 45-50 mm
700 bar

Series
CSE GS C

Single acting cylinders with lock nut, low height for confined spaces

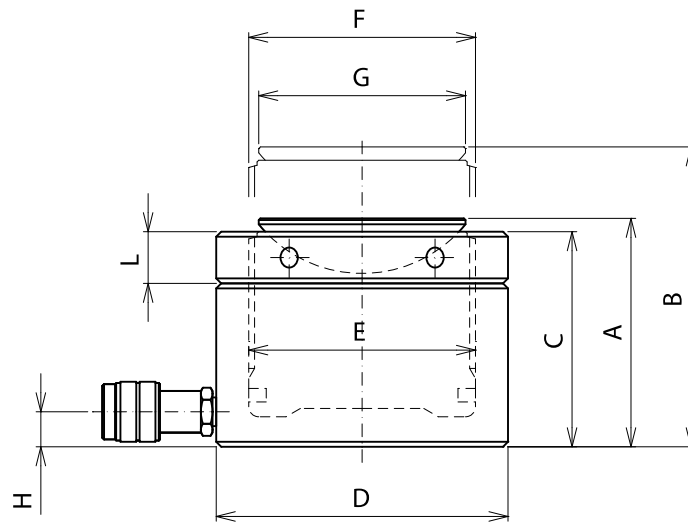
High tonnage and confined area



- High tonnage hydraulic cylinders with lock nut, reduced height, single acting. Push force from 60 to 500 tons with a range of strokes from 45 mm to 50 mm.
- Compact hydraulic cylinders, suitable for lifting operations pushing and heavy lifting. Lock nut for the maintenance of the load in complete safety.
- The guiding surfaces are sized to guarantee optimal performance in load offset absorption. Plugging execution, equipped with anti overstroke device.
- Equipped with high-strength gaskets for maximum durability.
- 3/8 " NPT female coupler with dust cap equipped.
- Tilting saddle for optimal offset load distribution.
- Nitox ONC treatment on all mechanical components for maximum resistance against corrosion and wear.
- All models weighing more than 20 kg are equipped with lifting eyebolts.
- Possibility to design and produce custom made hydraulic cylinders on request, with dedicated geometries, performances and features.

CUSTOM CYLINDERS ON REQUEST





CSE GS C

CAP/Force	STROKE	MODEL	EFFECTIVE AREA	VOLUME	MASS	DIMENSIONS in mm									MAX SADDLE INCLINATION
ton (kN)	mm		cm ²	cm ³	kg	A	B	C	D	E	F	G	H	L	(°)
60 /606	50	CSE-60/50-GS-C	86,6	433	15	125	175	119	140	105	Tr 105x4	96	19	28	5
100 /1002	50	CSE-100/50-GS-C	143,1	716	24,5	137	187	129	173	135	Tr 135x6	126	21	31	5
160 /1589	45	CSE-160/45-GS-C	228	1021	42,5	148	193	139	220	170	Tr 170x6	160	27	40	5
200 /1985	45	CSE-200/45-GS-C	283,5	1276	55	155	200	145	245	190	Tr 190x6	180	30	43	5
250 /2541	45	CSE-250/45-GS-C	363,1	1634	70	159	204	147	275	215	Tr 215x6	200	32	43	5
400 /4008	45	CSE-400/45-GS-C	572,6	2576	128	178	223	166	350	270	Tr 270x6	250	40	55	4
500 /5114	45	CSE-500/45-GS-C	730,6	3288	182	192	237	182	400	305	Tr 305x6	290	49	61,5	3

