

Bladder accumulator series EBV – CE

Construction

Bladder accumulator with sieve plate, pressure vessel of forged steel, seamless, heavy duty gas inlet valve, detachable.

Pre-Charge pressure PO

Between 0,9 P1 and 0,2 P2
Other pressure ratios on request.

Temperature range

Standard model -20 °C to +80 °C
Other ranges on request.

Volumetric flow Q

The max. values given in the selection table apply only for a vertical installation (hydraulic assembly downwards).
For horizontal installation or higher flow rates please contact us.

Hydraulic fluids

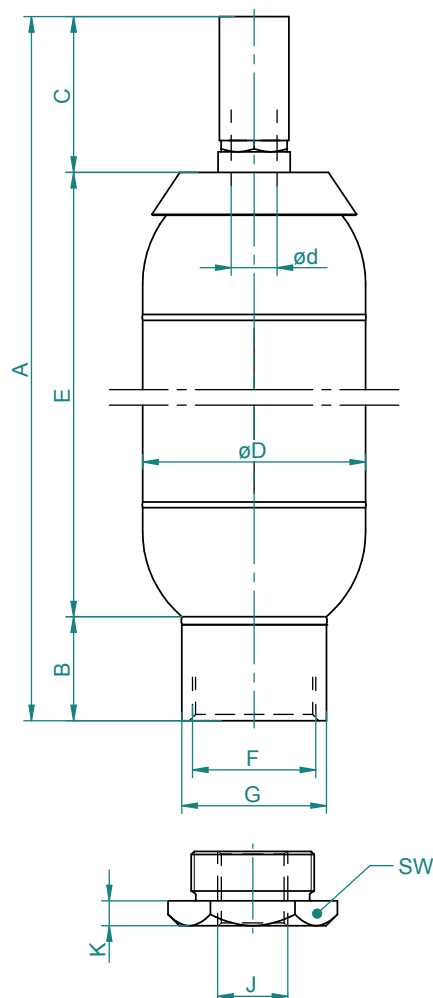
Hydraulic oil (mineral oil)
Other mediums, such as biodegradable hydraulic oil, non-flammable liquids, water, emulsions, fuels, ect. should be specified at the time of ordering.

Installation

Vertical (hydraulic assembly downwards) to horizontal.
Leave a space of 200 mm free above the gas inlet valve for attaching the tester and pressurizer instrument.

Method of mounting

Clamps and brackets with rubber core, or mounting set, see data sheet OSP 775 and OSP 780 "Accumulator-Accessories".



Model	Gasvol. V0 liter	Design pressure bar	Weight kg	Q max. l/min	Dimensions in mm										
					A	B	C	ø D	ø d	E	F	ø G	J	K	SW
EBV 0,5 – 50 / 00 *	0,5	50	3	450	245	52	28	90	16	163	G 2"	68	G 1"	13	65
EBV 1 – 80 / 00 *	1	80	5	450	310	47	65	116	22	194	G 2"	68	G 1"	13	65
EBV 2,5 – 80 / 90	3	80	10	450	484	47	65	116	22	366	G 2"	68	G 1"	13	65
EBV 5 – 80 / 90	5	80	17	450	867	47	65	116	22	749	G 2"	68	G 1"	13	65

Spare parts lists

Models: EBV 0,5 – EBV 5 liter

Pos.	Part
1	Bladder assembly ød*
2	Bladder
3	Gas inlet valve assembly
4	Valve cap and gasket
5	Gas inlet valve and gasket
6	Nut
7	Protective cap
8	Sieve plate
9	Snap ring
10	Gasket assembly (contains all gaskets)
11	Flat seal
12	O-ring

Important informations

- Certification: EBV series accumulators are manufactured, tested and documented according to the pressure equipment directive 2014/68/EC. Other certifications on demand.
- The technical data on the manufacturer's nameplate must be indicated on the order.
- The accumulator shell is not available as a spare part.
- Quality code used for the bladder.
- * ød should be specified at the time of ordering.

Example:

d = ø 16 mm EBV 0,5
d = ø 22 mm EBV 1 - 5

